

# Current Residential Opportunities

as of 12/08/14

## Apartment 119

**Floor Type A Studio- 550 Sq.Ft.**

**Close to dining room and common amenities**



## Apartment 322

**Floor Type B 1 bedroom: 750 Sq.Ft.**

**Move-in ready, renovated kitchen, sunroom**

## Apartment 115

**Floor Type B 1 bedroom: 750+ Sq.Ft.**

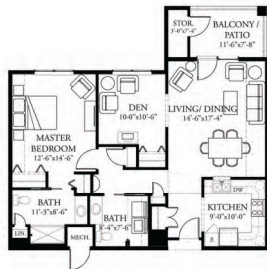
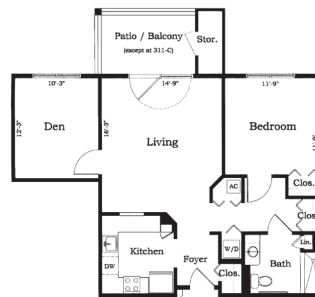
**Ground-level, sunroom, bonus square footage**

Plus bonus square footage.

## Apartment 204

**Floor Type C 1 bedroom w/ Den: 886 Sq.Ft.**

**Mountain views, close to amenities**



## Apartment 315

**Floor Type G 1 bedroom: 1100 + Sq.Ft.**

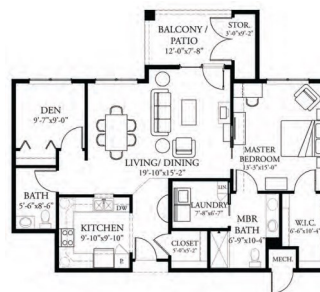
**Huge master, 2 patios, large kitchen**

Image is of typical G Plan. This particular unit has been altered and features a more open floor plan with 2 balconies and large Master

## Apartment T13

**Floor Type H 1 bedroom & den: 1180 Sq.Ft.**

**2 bath, hardwood, enclosed patio opens outside**



## Apartment 107

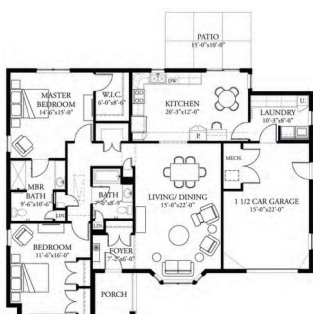
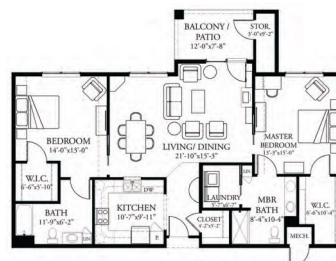
**Floor Type E 2 bedroom: 1170 Sq.Ft.**

**Move-in ready, hardwood floors, sunroom**

## Apartment 13

**Floor Type I 2 bedroom: 1300 Sq.Ft.**

**Spacious, 2 bath, patio, hardwood floors**



Plus full size basement

## Cottage 182

**Floor Type T+ 2 bedroom: 1500+ Sq.Ft.**

**Spacious, garage, full basement, deck**

\*Floor plan layouts are approximate and show typical layouts. Images may not reflect the actual layout.

Contact [info@kalex.kendal.org](mailto:info@kalex.kendal.org) or (800) 976-8303 for more information.

**KENDAL**  
at Lexington  
Together, transforming the experience of aging®